

University of California, Los Angeles
Public Health/Environmental Health Sciences
405 Hilgard Ave
BOX 951772
Los Angeles, CA 90095-1772
RE-12

Look for upcoming program announcements on our home page at
www.ph.ucla.edu/erc/ccd.php

NON-PROFIT ORG.
U.S. POSTAGE
PAID
UCLA

**Earn Your
Workplace Safety & Health
Professional Certificate**
From the UCLA School of Public Health
Education and Research Center in the

Please pass this information along to interested colleagues.

UCLA Southern California
Education and Research Center
UCIrvine *Continuing Education/Outreach*

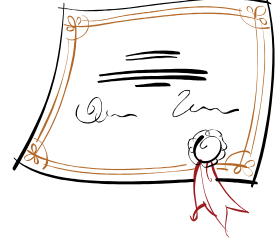
The Southern California Education and
Research Center is a NIOSH ERC

Safe

**Communities
Workplaces
Workers**

Earn Your NIOSH/ERC Workplace Safety & Health Professional Certificate

- Enhance your career
- Expand your horizons
- Contribute to a safer workplace
- 3 options
 - Workplace Safety & Health Professional Certificate
 - With Hazardous Substance Specialty
 - With Advanced Specialty



Location: UCLA

Workplace Safety & Health Professional Certificate

Overview

This comprehensive program provides certificate candidates with a thorough understanding of the challenges of workplace safety and health and the knowledge to be able to mitigate and/or overcome them. The curriculum includes core requirements and electives that allow participants to design the program best suited to their needs.

Though there are no educational requirements to enter the program, some classes require math and/or science knowledge and/or skills. Participants must also have professional level English language proficiency in reading comprehension, vocabulary, written expression and oral presentation.

Candidates must attend all sessions and pass written exams to receive credit towards SCERC Workplace Safety and Health Professional Certificate.

Elect the **Workplace Safety & Health Professional Certificate** or to upgrade to either the **Hazardous Substance Specialty** or the **Advanced Specialty**.

Course Details Online

<http://www.ph.ucla.edu/erc/certificate.php>

Who Should Attend

Safety managers, human resources managers, risk managers, industrial hygienists, hazardous materials managers, environmental managers, labor representatives, health and safety committee members, and anyone seeking to become a health and safety professional

Enrollment Fee

Fee to Enroll as a Candidate for any Workplace Safety & Health Professional Certificate — \$150 (You will be eligible for the discounted Certificate Candidate fee for all required and elective classes.)

Paying by credit card: All major credit cards accepted. Complete credit card information online or call 310/206-2304.

Paying by check: Payable to **University of California Regents**

Phone registration: Call 310/206-2304.

Online registration: www.ph.ucla.edu/erc/register.php.

**Enroll as a Certificate Candidate
or Take Individual Courses**

Requirements

CORE Required Courses

- Fundamentals of Workplace Safety - 24 hours (includes OSHA 10-Hour card)
- Introduction to Industrial Hygiene - 24 hours
- IIPP (Injury and Illness Prevention Program) - 8 hours
- Incident Investigation - 8 hours
- Workplace Violence - 4 hours
- Fleet/Vehicle - 8 hours
- Indoor Air Quality - 8 hours
- Sampling & Instrumentation - 8 hours
- Noise Control - 8 hours
- Ergonomics - 8 hours
- Confined Space Awareness - 8 hours - not required for Advanced Specialty
- Risk Assessment or Assessment Alternatives - 16 hours
- Introduction to Hazardous Substances - 4 hours - not required for Hazardous Substance Specialty
- Chemical Hazards/Hazard Communication or Introduction to Toxicology - 8 hours
- Ethics for Health and Safety Professionals – 4 hours

Electives Candidates for Workplace Safety & Health Professional Certificate — Choose 24 hours of coursework from any of the courses below including specialty lists

Hazardous Substance Specialty—add

- Respiratory Protection - 24 hours
- PPE - 4 hours
- 40-Hour HAZWOPER
- 40-Hour Emergency Response or
- CHMM Review - 24 hours

Advanced Specialty—add

- Advanced Ergonomics - 16 hours or
- Ergonomics Symposium - 16 hours or
- Advanced Ergonomics Webinar Series - 12 hours
- Advanced Indoor Air Quality - 8 hours
- Biological Hazards - 8 hours
- Ventilation - 8 hours
- Mold Symposium - 16 hours
- Pesticides - 8 hours
- Permit-Required Confined Space - 24 hours
- Toxicology - 8 hours

Other Electives

- Stress, Work Organization - 8 hours
- Planned Inspections - 4 hours
- Budgeting and Planning - 4 hours
- Risk Communication - 4 hours
- Report Writing - 8 hours
- New electives to come including Nanotechnology and Green Chemistry

Benefits of Certificate Candidacy

- **Professional certificate from a NIOSH (National Institute of Occupational Safety & Health) Education and Research Center in the UCLA School of Public Health**
- Guaranteed lowest registration fee for any class (as long as you register no less than 10 days prior to first day of class)
- Eligible for available scholarship assistance