

# UCLA PUBLIC HEALTH

**Norman Abrams**  
Acting Chancellor

**Linda Rosenstock, M.D., M.P.H.**  
Dean, UCLA School of Public Health

**Sarah Anderson**  
Assistant Dean for Communications

**Anita Mermel**  
Executive Director of Development

**Dan Gordon**  
Editor and Writer

**Martha Widmann**  
Art Director

## EDITORIAL BOARD

**Richard Ambrose, Ph.D.**  
Professor,  
Environmental Health Sciences

**Thomas R. Belin, Ph.D.**  
Associate Professor, Biostatistics

**Ralph Frerichs, D.V.M., Dr.P.H.**  
Professor, Epidemiology

**F. A. Hagigi, Dr.P.H., M.B.A.**  
Associate Professor, Health Services

**William Hinds, Ph.D.**  
Professor, Environmental Health Sciences

**Michael Prelip, D.P.A.**  
Assistant Professor,  
Community Health Sciences

**Kevin Loh**  
President, Public Health Student Association

**Christopher Mardesich, J.D., M.P.H. '98**  
President, Alumni Association

## features

# 4



## Troubled Waters – Science, Policy and the Fight to Preserve Our Natural Resources

**Pollution. Drought. Overdevelopment. Overconsumption. SPH faculty, students and alumni lead the effort to keep our oceans, streams, wetlands and drinking water healthy, clean and abundant.**

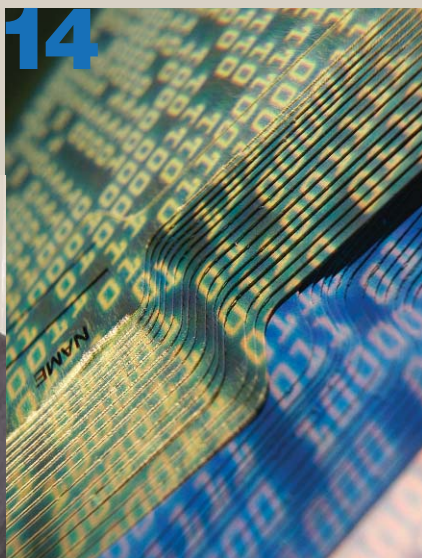


Charlotte Neumann: Pediatrician Provides Food for Thought



12

Her seminal work in Africa shows that adding small amounts of meat to malnourished children's diets improves school performance. In Los Angeles, she tackles a very different nutritional problem.



14 Making Healthy Connections: Unleashing the Power of Information Technology Systems

As computers have gotten faster and cheaper, health care and public health are beginning to apply informatics and other strategies to improve the way they do business.

Students of Color for Public Health: Engaging Diverse Communities, Supporting Each Other



18

Group making its mark by fostering discussion and action among SPH students committed to working on behalf of populations of color, and helping members succeed.

in every issue

- 22 RESEARCH**  
Salad's benefits...hypertension and long work hours...air pollution's risk to infants...health benefits of marriage...weight obsession and exercise motivation...risky behavior after new HIV infection...correcting refractive error in elderly.
- 28 STUDENTS**
- 30 NEWS BRIEFS**
- 32 FACULTY**

PHOTOGRAPHY

Reed Hutchinson / Cover: Luck, Otiniano; TOC: Students of Color for Public Health; pp. 4-7, 9-12, 15, 19, 21, 28; p. 32: Keeler

Lisa Hancock / p. 17: Balgrosky; p. 32: Rice

Glenn Wong / Cover: Otieno; p. 29

Judith Ernst / TOC: Neumann

Danny Moder / p. 31

Courtesy of Shannon Pankratz / TOC: Water; p. 8

Courtesy of Paul Fu, Jr. / p. 16

Courtesy of Jeff Luck / p. 17: CHIS website home page

Courtesy of Raphael Travis / p. 18

Courtesy of the UCLA School of Public Health / pp. 2, 20, 30, 31: Oppenheimer; p. 32: Symposium

Getty Images © 2006 / Cover: Water; pp. 22, 24-25

Punchstock © 2006 / TOC: Making Healthy Connections; pp. 14, 27

School of Public Health Home Page: [www.ph.ucla.edu](http://www.ph.ucla.edu)  
E-mail for Application Requests: [app-request@admin.ph.ucla.edu](mailto:app-request@admin.ph.ucla.edu)

UCLA Public Health Magazine is published by the UCLA School of Public Health for the alumni, faculty, students, staff and friends of the school. Copyright 2006 by The Regents of the University of California. Permission to reprint any portion must be obtained from the editor. Contact Editor, UCLA Public Health Magazine, Box 951772, Los Angeles, CA 90095-1772. Phone: (310) 825-6381.